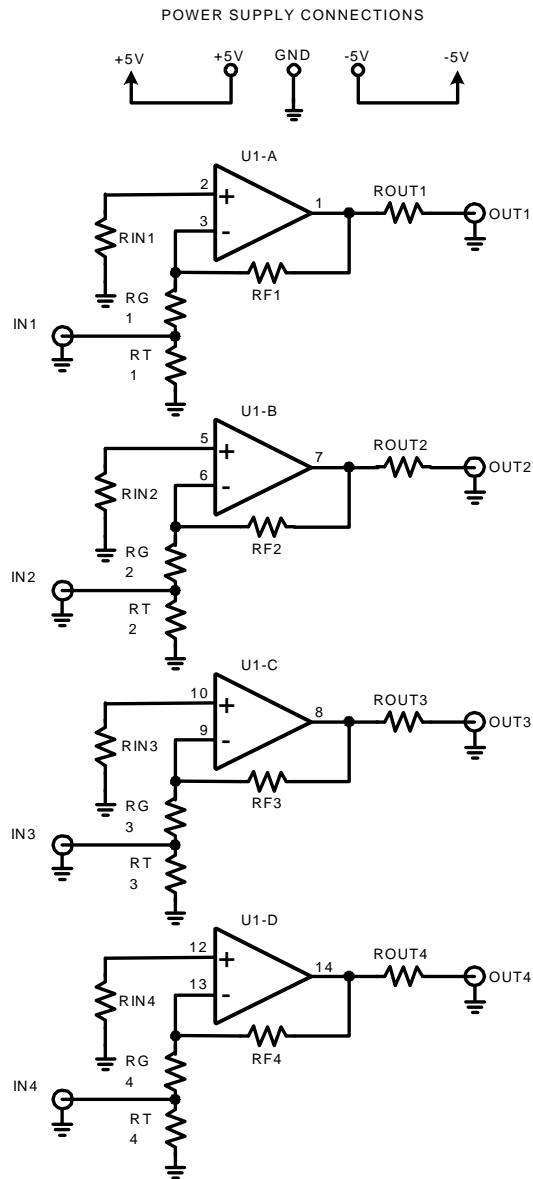


**Figure 1: Non-Inverting Op Amp Configuration
(Default Board Configuration)**



BOARD MOUNTING HOLES

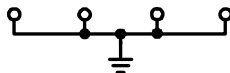


Figure 2: Inverting Op Amp Configuration
 (Please Follow Page 5 Modification for Inverting Gain)

NATIONAL SEMICONDUCTOR LAYER1 SILK

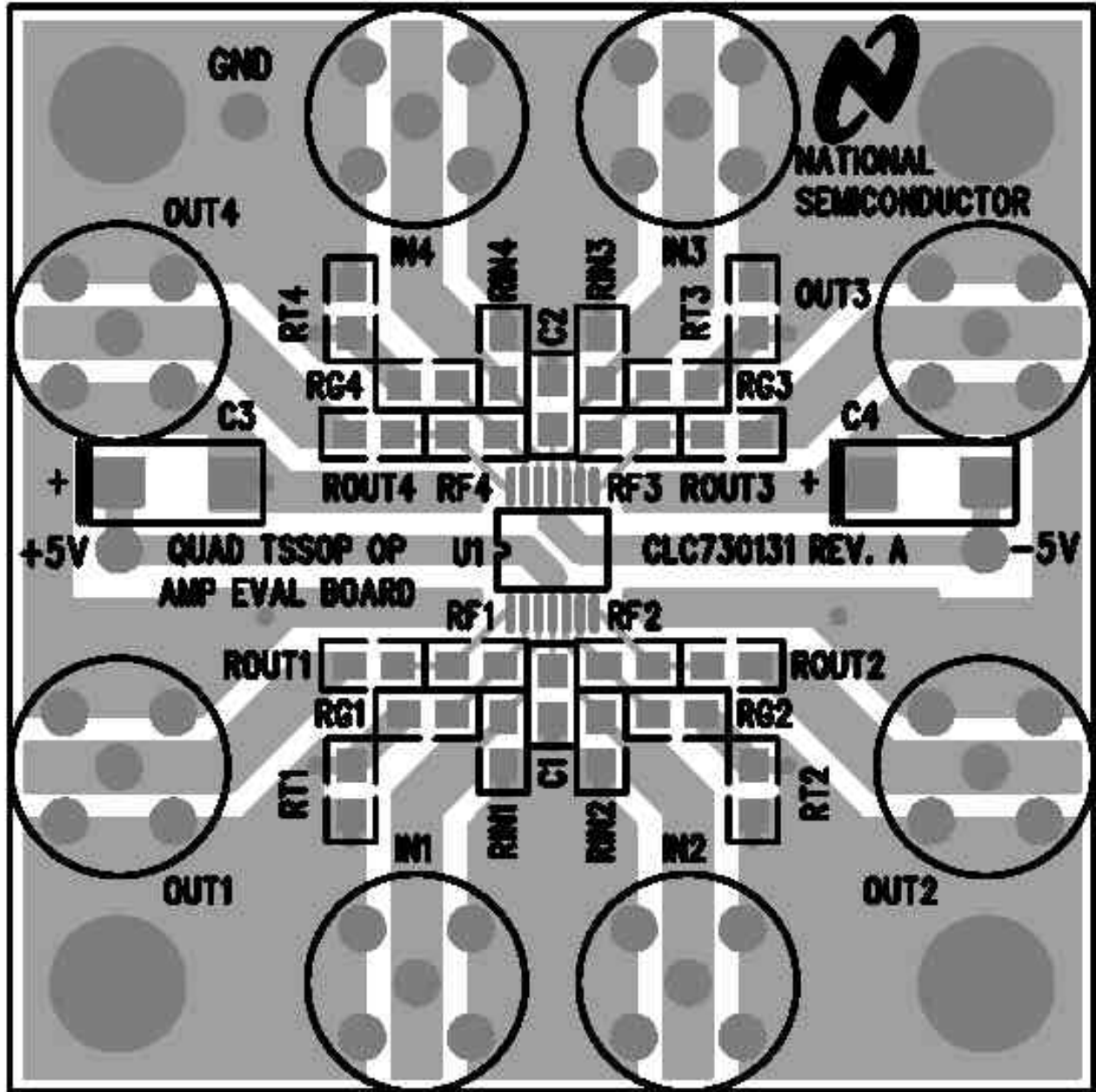


Fig. 3: Component Side View

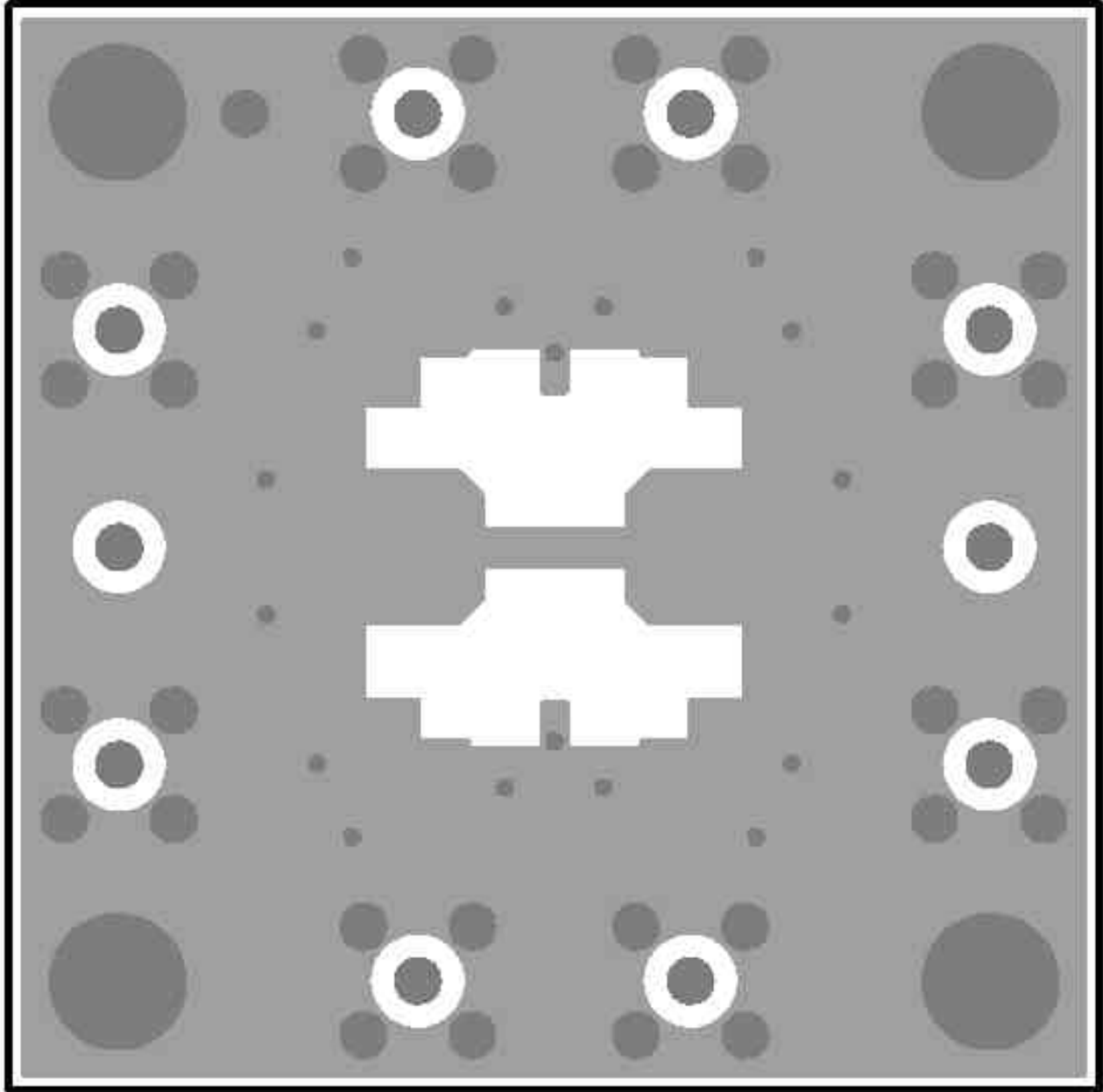


Fig. 4: Circuit Side View

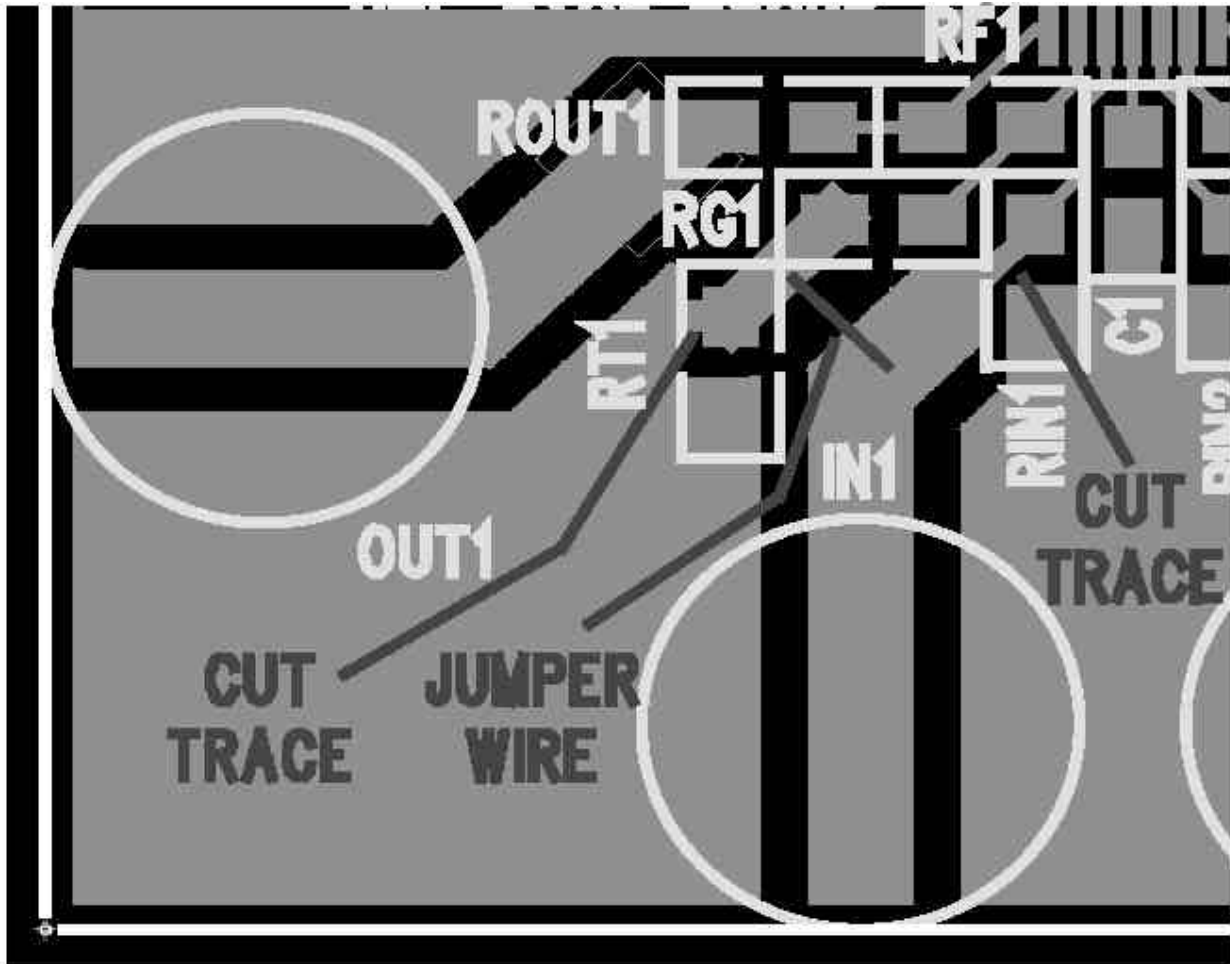


Fig. 5: Details of Modification to Inverting Gain

CLC730131 evaluation board is configured for non-inverting gain. However, it is possible to configure the board for inverting gain. To convert to inverting gain, do the following changes:

How to convert the board for Inverting Gain:

1. Cut RT1 from ground plane by cutting trace going from RT1 (terminal closest to RG1) to the top ground plane. See drawing above.
2. Cut RIN1 from input signal trace by cutting trace going from RIN1 (terminal closest to RG1) to the input signal trace, see drawing above.
3. Add jumper wire from input signal trace to trace connecting RG1 to RT1, see drawing above.

Changes shown for channel 1 only. Repeat these steps on the corresponding components for the other three channels.

LIFE SUPPORT POLICY

NATIONAL'S PRODUCTS ARE NOT AUTHORIZED FOR USE AS CRITICAL COMPONENTS IN LIFE SUPPORT DEVICES OR SYSTEMS WITHOUT THE EXPRESS WRITTEN APPROVAL OF THE PRESIDENT AND GENERAL COUNSEL OF NATIONAL SEMICONDUCTOR CORPORATION. As used herein:

1. Life support devices or systems are devices or systems which, (a) are intended for surgical implant into the body, or (b) support or sustain life, and whose failure to perform when properly used in accordance with instructions for use provided in the labeling, can be reasonably expected to result in a significant injury to the user.
2. A critical component is any component of a life support device or system whose failure to perform can be reasonably expected to cause the failure of the life support device or system, or to affect its safety or effectiveness.

National Semiconductor Corporation Americas

Tel: 1-800-272-9959
Fax: 1-800-737-7018
Email: support@nsc.com

National Semiconductor Europe

Fax: +49 (0) 180-530-85 86
Email: europe.support@nsc.com
Deutsch Tel: +49 (0) 69 9508 6208
English Tel: +44 (0) 870 24 0 2171
Francais Tel: +33 (0) 1 41 91 8790

National Semiconductor Asia Pacific Customer Response Group

Tel: 65-2544466
Fax: 65-2504466
Email: ap.support@nsc.com

National Semiconductor Japan Ltd.

Tel: 81-3-5639-7660
Fax: 81-3-5639-7507

National does not assume responsibility for use of any circuitry described, no circuit patent licenses are implied and National reserves the right at any time without notice to change said circuitry and specifications.