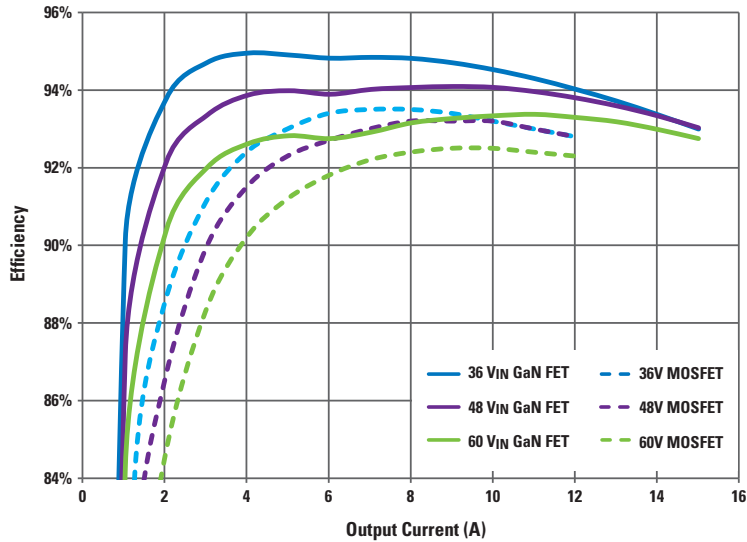


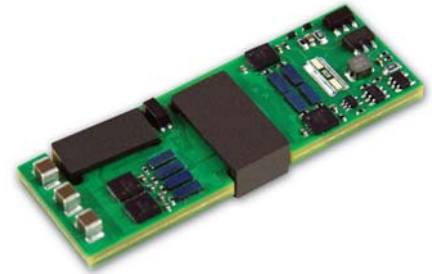
First Gate Driver for Enhancement Mode GaN Power FETs

GaN FET Efficiency vs Traditional MOSFET

Input 36 to 75V; Regulated output 12V; Switching frequency at 333 KHz
GaN FET, 250 KHz MOSFET



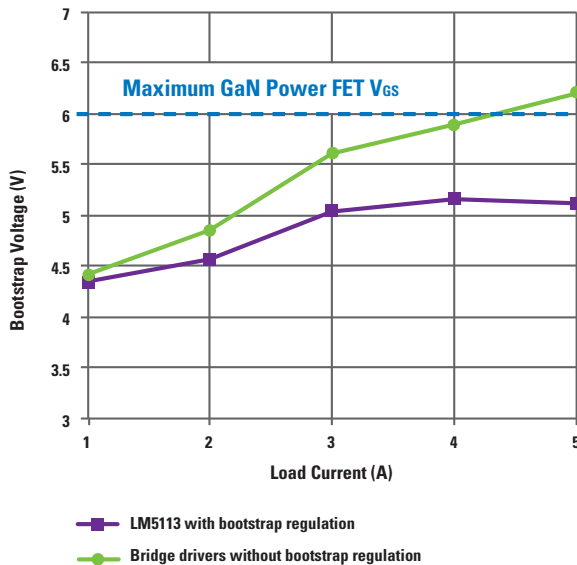
180W 1/8 Power Brick



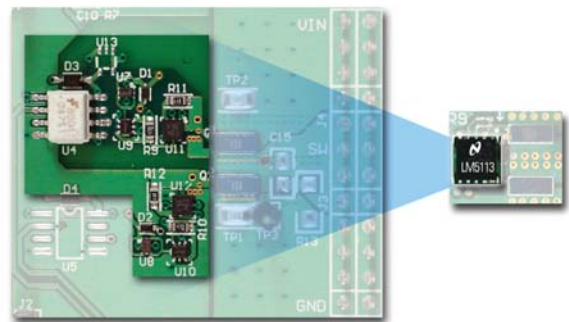
1/8 power brick featuring the EPC2001 eGaN FET and LM5113 GaN FET driver.

LM5113 Bootstrap Voltage Regulation, Synchronous Buck Converter Evaluation Board

Input 48V; Output 10V; Switching frequency at 800 KHz



Discrete Driver Solution and Integrated LM5113 Driver



The LM5113 delivers tremendous efficiency and PCB area savings compared to discrete implementations.

National Semiconductor
2900 Semiconductor Drive
Santa Clara, CA 95051
1 800 272 9959

Mailing address:
PO Box 58090
Santa Clara, CA 95052

Visit our website at:
national.com/isolatedpower

For more information, send email to:
support@nsc.com

