

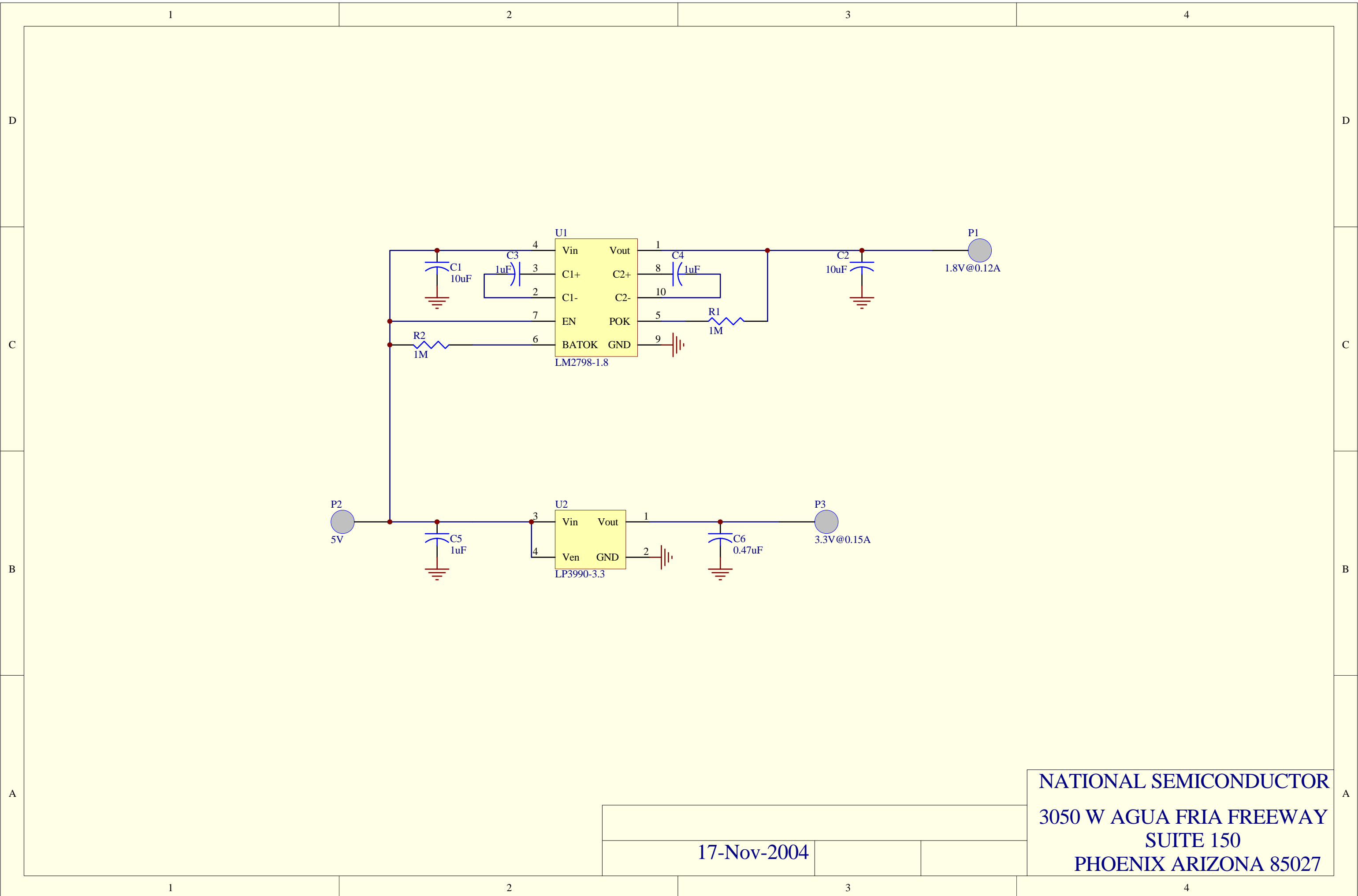


Altera MAX II-G Complete Reference Design

5V in; 1.8V @ 120mA out (Vccint) and 3.3V @ 150mA (Vccio)

National Semiconductor Corp. 2004.

Designator	Part Type	Manufacturer Part No	Description
C1	10uF	TDK C2012X5R0J106	Capacitor Ceramic X5R
C2	10uF	TDK C2012X5R0J106	Capacitor Ceramic X5R
C3	1uF	TDK C2012X5R1C105	Capacitor Ceramic X5R
C4	1uF	TDK C2012X5R1C105	Capacitor Ceramic X5R
C5	1uF	TDK C2012X5R1C105	Capacitor Ceramic X5R
C6	0.47uF	TDK C2012X7R1E474	Capacitor Ceramic X7R
P1	1.8V@0.12A		TEST POINT
P2	5V		TEST POINT
P3	3.3V@0.15A		TEST POINT
R1	1M	VISHAY CRCW08051004F	1% Thick Film
R2	1M	VISHAY CRCW08051004F	1% Thick Film
U1	LM2798-1.8	NAT SEMI LM2798-1.8	120mA Inductorless Switching Regulator
U2	LP3990-3.3	NAT SEMI LP3990-3.3	0.15A SOT23 LDO



NATIONAL SEMICONDUCTOR
 3050 W AGUA FRIA FREEWAY
 SUITE 150
 PHOENIX ARIZONA 85027

17-Nov-2004