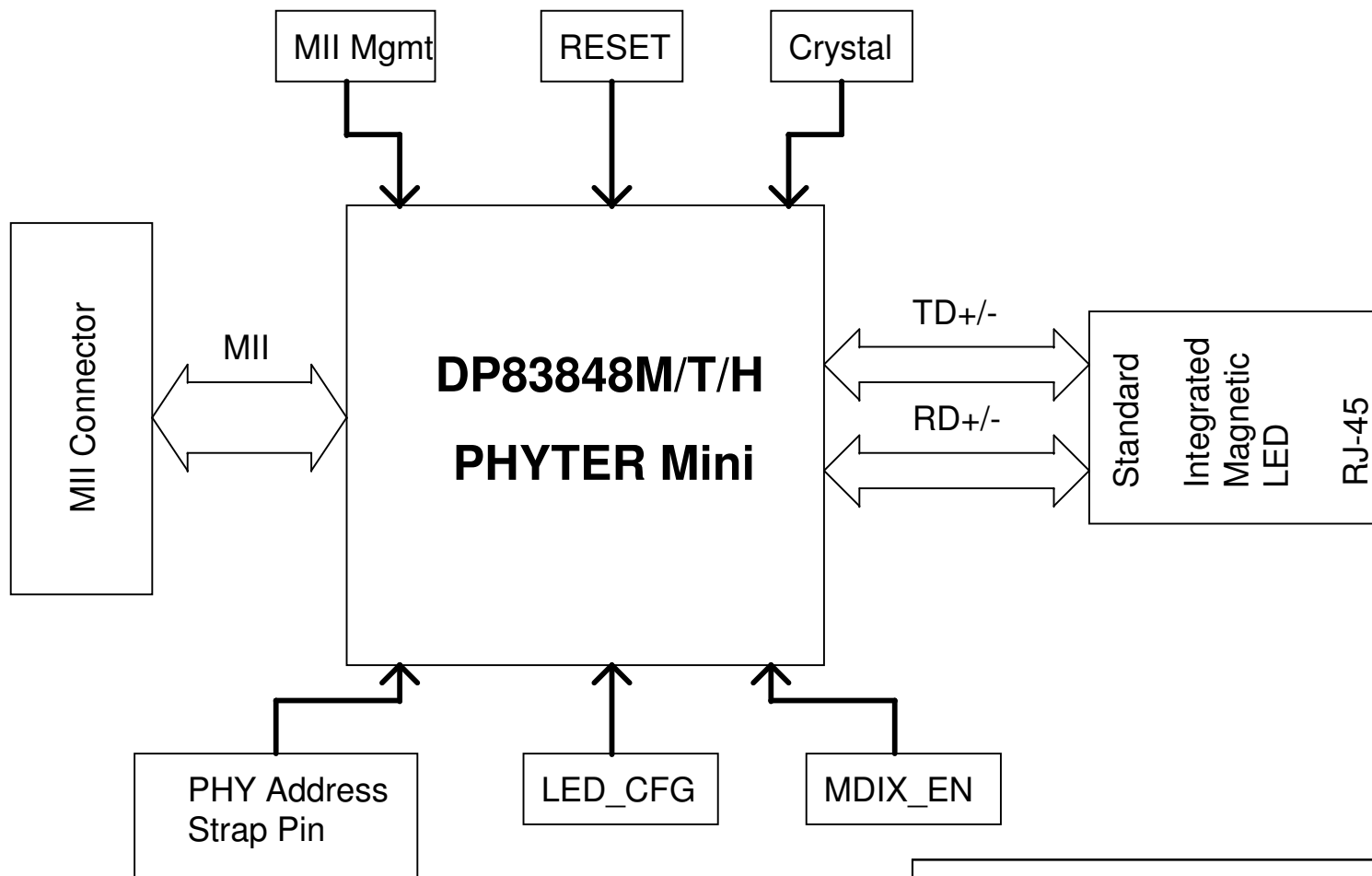


These schematics are provided for reference only. For any designs based on these schematics always contact National Semiconductor Corporation BEFORE initiating PCB manufacturing and ask for your design to be reviewed. Copyright (c) 2005 National Semiconductor Corporation. All Rights Reserved. Unpublished rights reserved under the copyright laws of the United States of America, other countries and international treaties. These schematics are provided without fee. Permission to use, copy, store, modify, disclose, transmit or distribute the schematics is granted, provided that this copyright notice must appear in any copy, modification, disclosure, transmission or distribution of the schematics. National Semiconductor Corporation retains all ownership, copyright, trade secret and proprietary rights in the schematics. THESE SCHEMATICS HAVE BEEN PROVIDED "AS IS", WITHOUT EXPRESS OR IMPLIED WARRANTY INCLUDING, WITHOUT LIMITATION, IMPLIED WARRANTIES OF MERCHANTABILITY, FITNESS FOR A PARTICULAR USE AND NON-INFRINGEMENT.



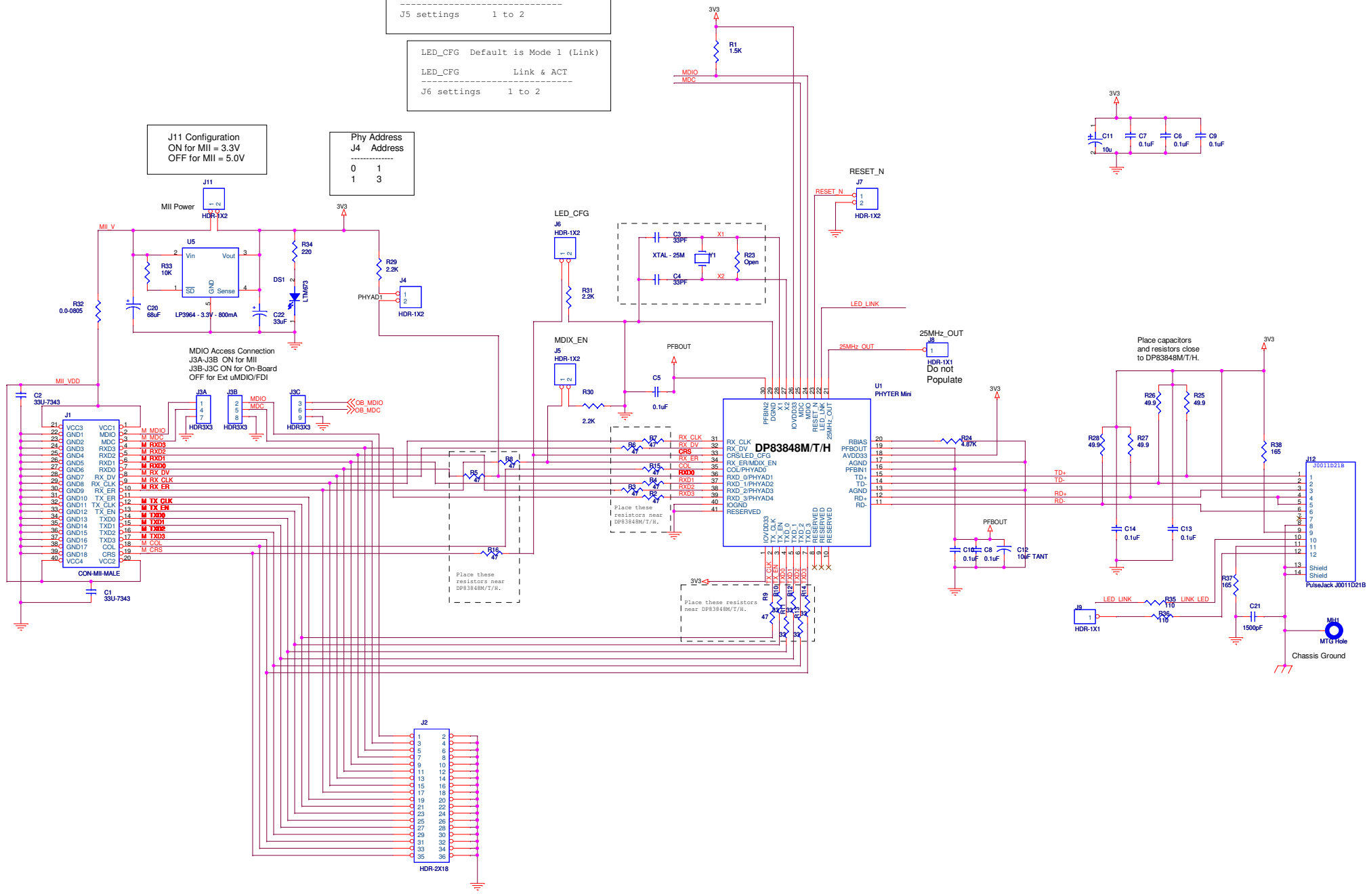
Title		
DP83848M/T/H PHYTER Mini MAU Demo II - Trike II - Block Diagram		
Size	Document Number	Rev
Custom	870012784-100	B
Date:	Monday, July 10, 2006	Sheet 1 of 3

Auto_MDIX: Default is Auto_MDIX ON
 Auto_MDIX OFF
 J5 settings 1 to 2

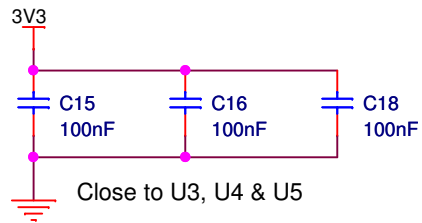
LED_CFG Default is Mode 1 (Link)
 LED_CFG Link & ACT
 J6 settings 1 to 2

J11 Configuration
 ON for MII = 3.3V
 OFF for MII = 5.0V

Phy Address
 J4 Address
 0 1
 1 3



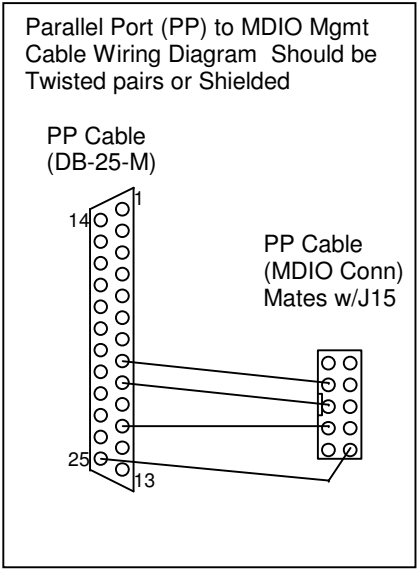
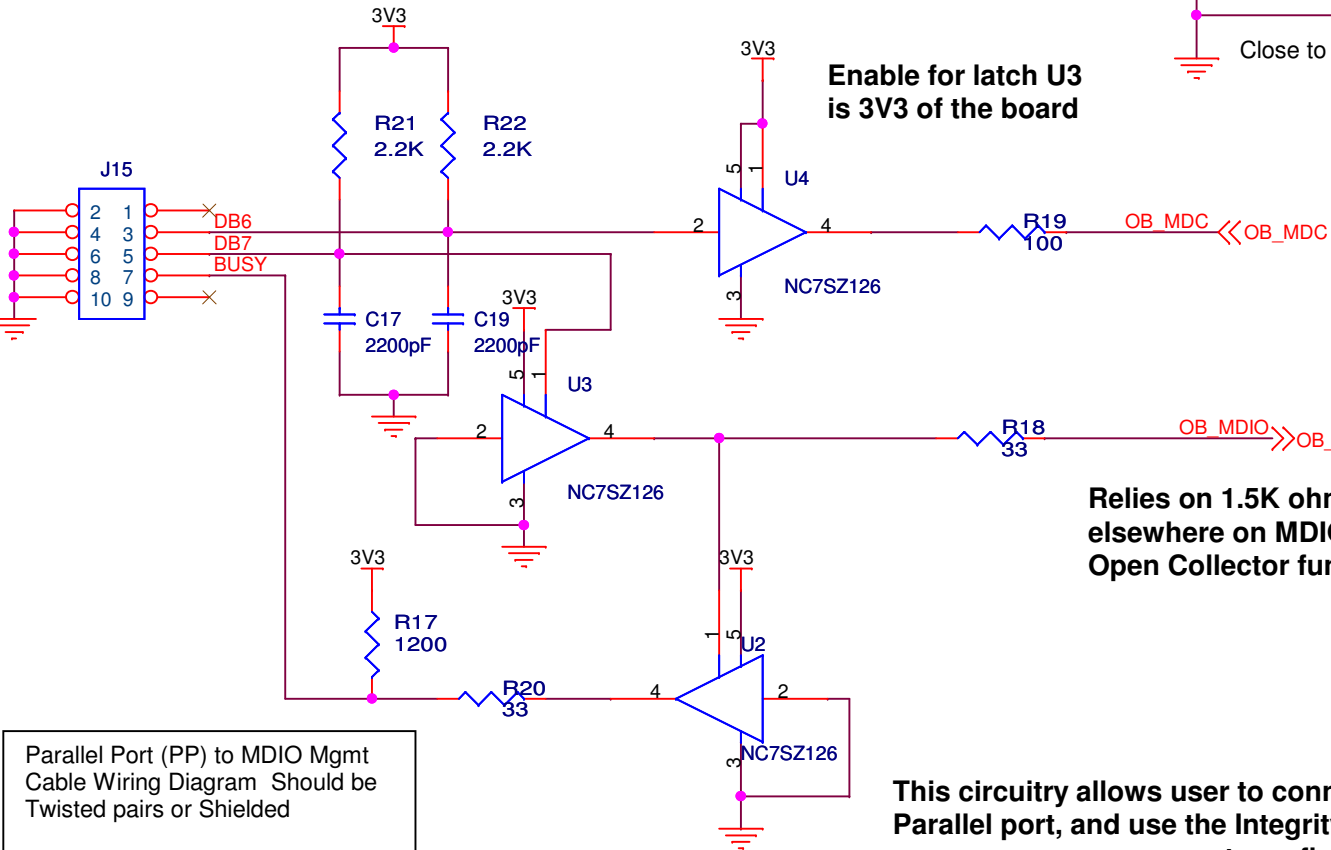
Supply for all latches is 3V3 of the board



Enable for latch U3 is 3V3 of the board

Relies on 1.5K ohm pullup elsewhere on MDIO for Open Collector function

This circuitry allows user to connect directly to PC Parallel port, and use the Integrity Utility for device access; e.g. management, configuration, status, etc.



Title		
DP83848M/T/H PHYTER Mini MAU Demo II - Trike II - MDIO Mgmt		
Size	Document Number	Rev
A	870012784-100	B
Date:	Monday, July 10, 2006	Sheet 3 of 3