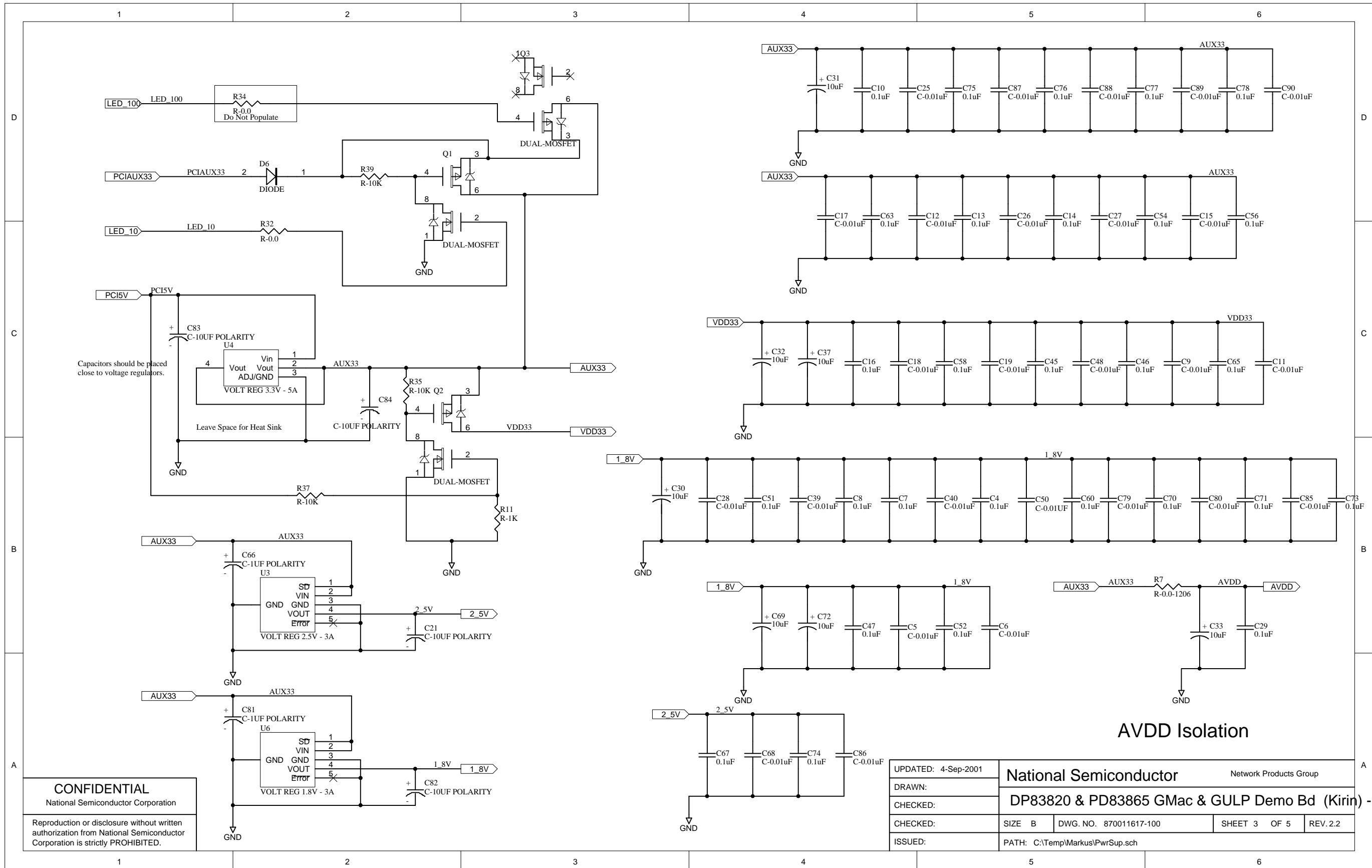


CONFIDENTIAL
National Semiconductor Corporation
Reproduction or disclosure without written authorization from National Semiconductor Corporation is strictly PROHIBITED.

Top Level Schem
TopLevel.sch

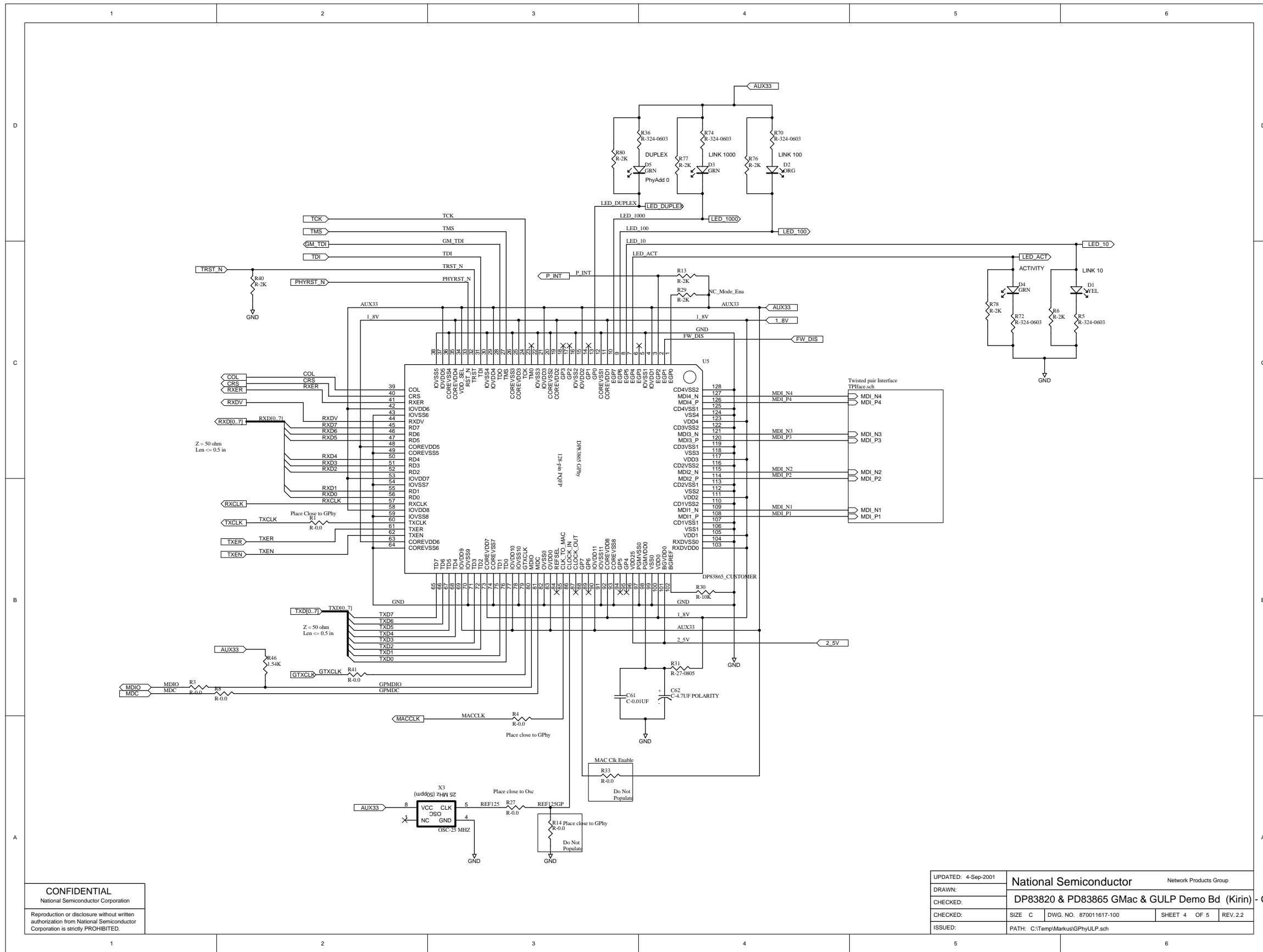
UPDATED: 4-Sep-2001	National Semiconductor			Network Products Group
DRAWN:	DP83820 & DP83865 GMac & GULP Demo Platform (Cetus)			
CHECKED:	SIZE B	DWG. NO. 870011617-100	SHEET 1 OF 5	REV. 2.2
ISSUED:	PATH: C:\Temp\Markus\GnicDemoULP.prj			



CONFIDENTIAL
National Semiconductor Corporation
Reproduction or disclosure without written authorization from National Semiconductor Corporation is strictly PROHIBITED.

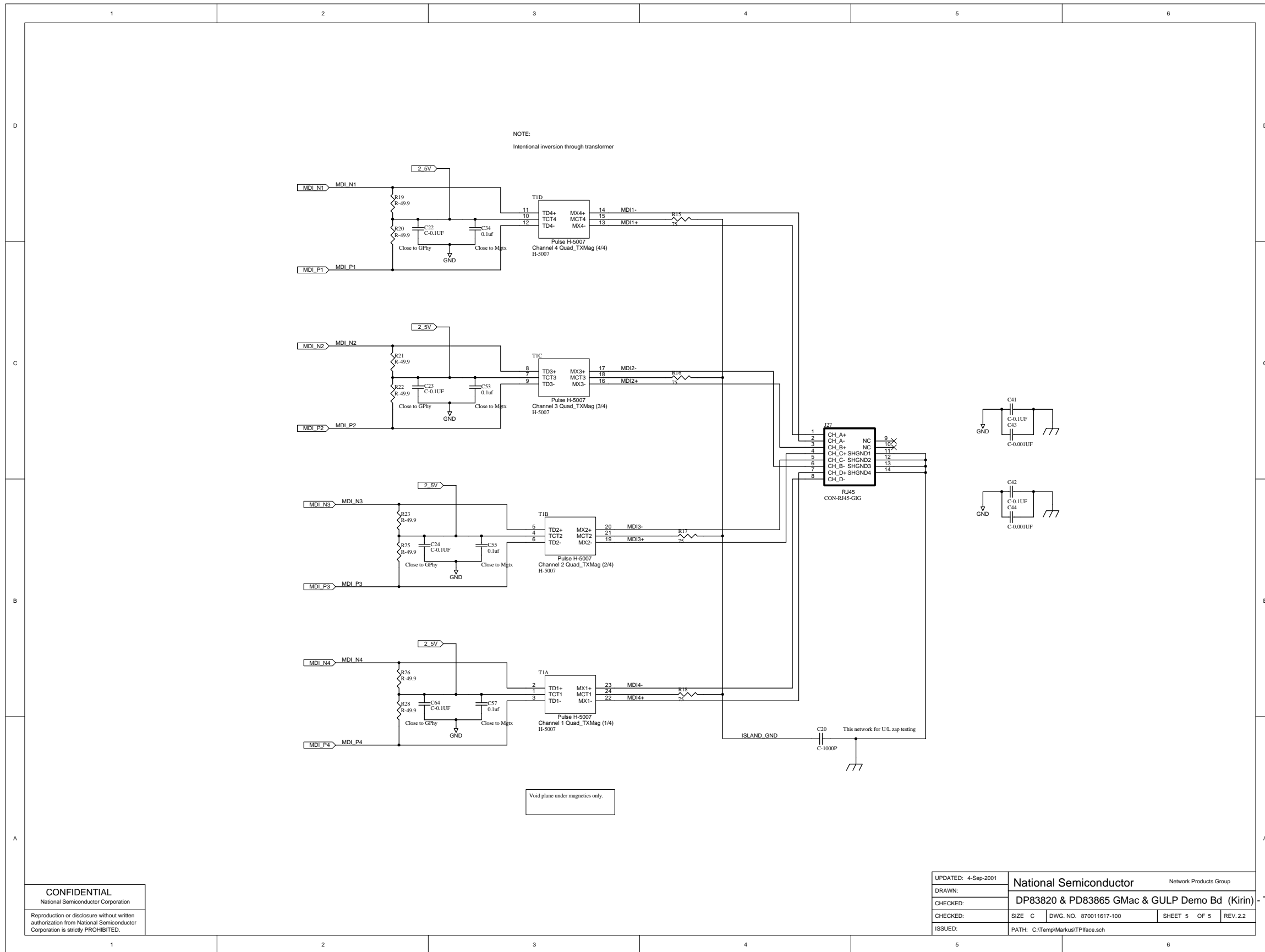
UPDATED: 4-Sep-2001	National Semiconductor			Network Products Group
DRAWN:	DP83820 & PD83865 GMac & GULP Demo Bd (Kirin) - Power Sources			
CHECKED:	SIZE B	DWG. NO. 870011617-100	SHEET 3 OF 5	REV. 2.2
ISSUED:	PATH: C:\Temp\Markus\PwrSup.sch			

Power Sources



CONFIDENTIAL
National Semiconductor Corporation
Reproduction or disclosure without written authorization from National Semiconductor Corporation is strictly PROHIBITED.

UPDATED: 4-Sep-2001	National Semiconductor		Network Products Group	
DRAWN:	DP83820 & PD83865 GMac & GULP Demo Bd (Kirin) - GPhy Interface			
CHECKED:	SIZE C	DWG. NO. 870011617-100	SHEET 4	OF 5
ISSUED:	REV. 2.2		PATH: C:\Temp\Markus\GPhy\ULP.sch	



CONFIDENTIAL
National Semiconductor Corporation
Reproduction or disclosure without written authorization from National Semiconductor Corporation is strictly PROHIBITED.

UPDATED: 4-Sep-2001	National Semiconductor		Network Products Group	
DRAWN:	DP83820 & PD83865 GMac & GULP Demo Bd (Kirin) - TP Interface			
CHECKED:	SIZE C	DWG. NO. 870011617-100	SHEET 5	OF 5
ISSUED:	REV. 2.2		PATH: C:\Temp\Markus\TP\face.sch	