

A Micropower Voltage Reference

National Semiconductor
Linear Brief 34
June 1976



A low-drift voltage reference can be easily made by converting a zero temperature coefficient current to a voltage. JFETs biased slightly below pinch-off exhibit a zero temperature coefficient drain current (I_D) as shown in *Figure 1*. With the above property and a micropower operational amplifier, used to convert the drain current to a voltage, a low power consumption voltage reference can be built as shown in *Figure 2*. The consumption of LM4250 op amp is programmed through resistor R_{SET} . Potentiometer P1 should be adjusted for low output (V_{REF}) temperature coefficient. Actually, it can be trimmed for positive, negative or zero temperature coefficient. The output voltage is trimmed through P2 and it is expressed by:

$$V_{REF} = I_{D1} (P_2 + R_1 + R_2),$$

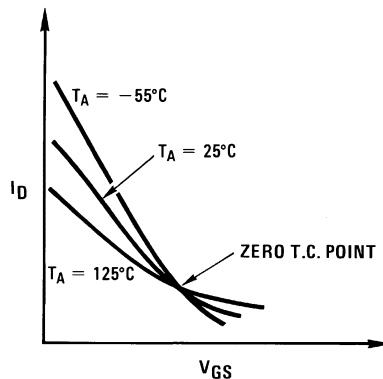
$$R_2 = R_3, I_{D1} \cong I_{DSS} \left[1 - \frac{V_{GS}}{V_P} \right]^2$$

With the values shown in *Figure 2*, the temperature coefficient of the output is 0.002%/°C and the overall standby current less than 100 μ A. The characteristics of the LM4250

are a function of its supply current, which depends on R_{SET} , and V^+ . V^+ can be provided by V_{REF} through the addition of a second FET, J2, shown in *Figure 3*. This way the parameters of the op amp will be independent of the unregulated input. The reference voltage can be taken from the wiper of the potentiometer P2 ($V_{REF} = V^+$) or from the source of J2 ($V_{REF} > V^+$). In the first case, the output impedance of the circuit is quite high and buffering may be required according to the application. The output impedance in the second case is low, essentially the $1/g_m$ of (J2) divided by the loop gain of the circuit. In this case, a small temperature coefficient due to the supply current of the LM4250 is going to be added and be compensated for by an additional trimming of P1. V_{REF} is computed by:

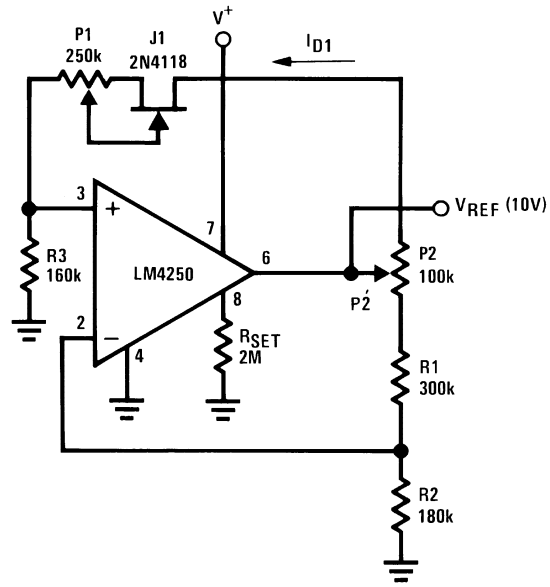
$$V_{REF} \cong I_{D1} [P_2 + R_1 + R_2] + P_2 [I_S + I_{D1}],$$

$$R_2 = R_3, I_S \cong \frac{6(V^+ - V_{BE})}{R_{SET}}$$



00873401

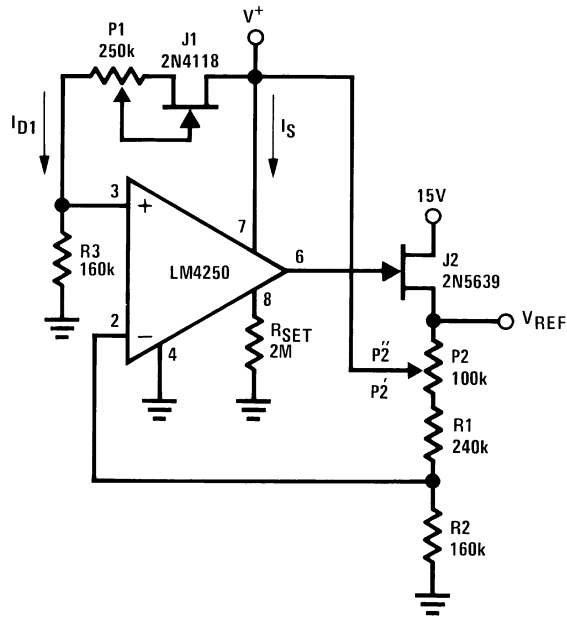
FIGURE 1. FET Transfer Characteristics



00873402

P1 = Drift Adjust
 P2 = V_{REF} Adjust

FIGURE 2. Basic Voltage Reference



00873403

FIGURE 3. Improved Voltage Reference

Notes

LIFE SUPPORT POLICY

NATIONAL'S PRODUCTS ARE NOT AUTHORIZED FOR USE AS CRITICAL COMPONENTS IN LIFE SUPPORT DEVICES OR SYSTEMS WITHOUT THE EXPRESS WRITTEN APPROVAL OF THE PRESIDENT AND GENERAL COUNSEL OF NATIONAL SEMICONDUCTOR CORPORATION. As used herein:

1. Life support devices or systems are devices or systems which, (a) are intended for surgical implant into the body, or (b) support or sustain life, and whose failure to perform when properly used in accordance with instructions for use provided in the labeling, can be reasonably expected to result in a significant injury to the user.
2. A critical component is any component of a life support device or system whose failure to perform can be reasonably expected to cause the failure of the life support device or system, or to affect its safety or effectiveness.



National Semiconductor Corporation
Americas
Email: support@nsc.com

www.national.com

National Semiconductor Europe

Fax: +49 (0) 180-530 85 86
Email: europe.support@nsc.com
Deutsch Tel: +49 (0) 69 9508 6208
English Tel: +44 (0) 870 24 0 2171
Français Tel: +33 (0) 1 41 91 8790

National Semiconductor Asia Pacific Customer Response Group

Tel: 65-2544466
Fax: 65-2504466
Email: ap.support@nsc.com

National Semiconductor Japan Ltd.

Tel: 81-3-5639-7560
Fax: 81-3-5639-7507