

LM7705 Evaluation Board

National Semiconductor
Application Note 1883
Ger Rietveld
May 19, 2009



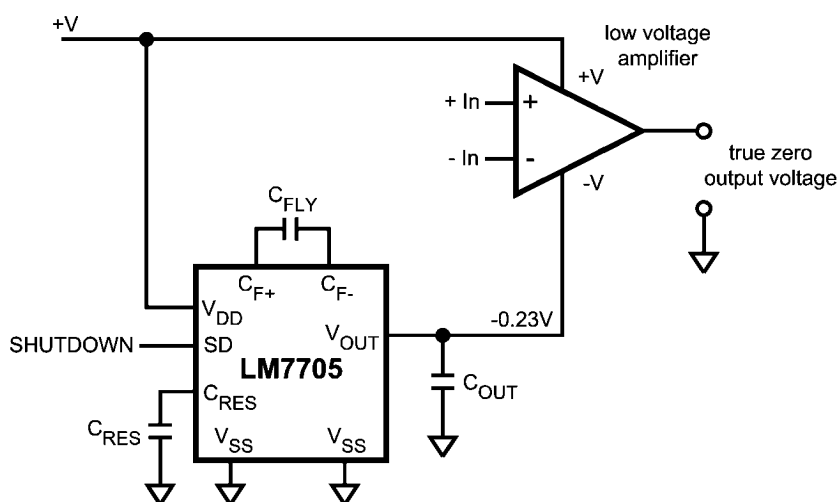
General Description

This evaluation board is designed to demonstrate the functionality of National Semiconductors LM7705 Low Noise Negative Bias Generator. The board has a dual Operational Amplifier that can be connected to ground or biased with the on board LM7705. In the last case a True zero amplifier is demonstrated.

Basic Operation

The LM7705 is a switched capacitor voltage inverter with a low noise, -0.23V fixed negative voltage regulator. This de-

vice is designed to be used with low voltage amplifiers to enable the amplifiers output to swing to zero volts, having a single supply. The -0.23V is used to supply the negative supply pin of an amplifier. Rail-to-rail output amplifiers cannot output zero voltage when operating from a single supply voltage and can result in error accumulation due to amplifier output saturation voltage being amplified by following gain stages. A small negative supply voltage will prevent the amplifiers output from saturating at zero volts and will help maintain an accurate zero through a signal processing chain. This is illustrated in *Figure 1*.



30073101

FIGURE 1. Typical LM7705 Application

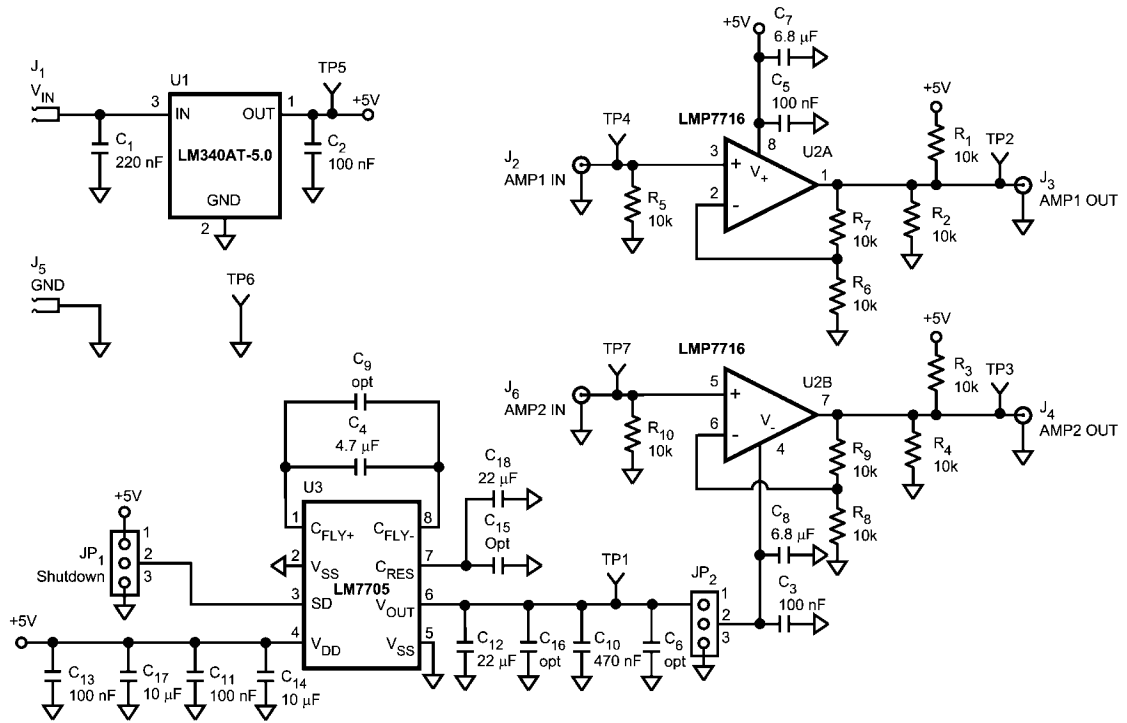
Additionally when an amplifier is used to drive an ADC's input, it can output a zero voltage signal and the full input range of an ADC can be used. The LM7705 has a shutdown pin to minimize standby power consumption.

Layout Considerations

Careful consideration for circuitry design and PCB layout will eliminate problems and will optimize the performance of the LM7705.

To ensure a clean supply voltage it is best to place decoupling capacitors close to the LM7705, between V_{DD} and V_{SS} . Another important issue is the value of the capacitors C_{FLY} , C_{RES} and C_{OUT} . In order to minimize the output voltage ripple low ESR capacitors are recommended.

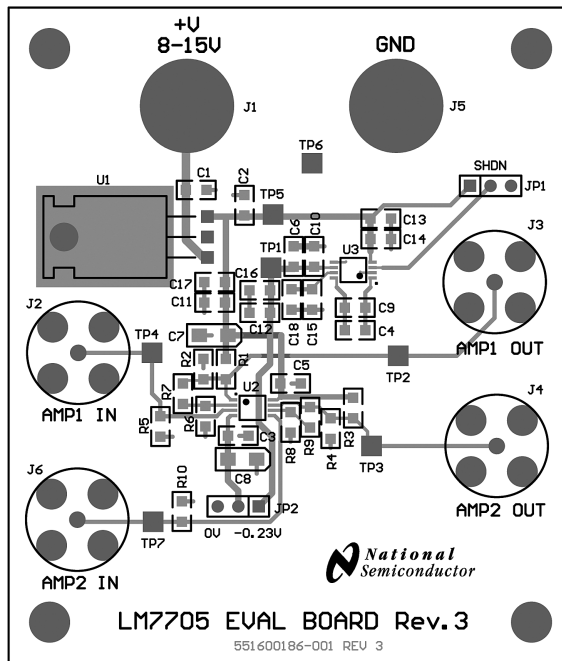
Figure 2 shows the schematic of the evaluation board.



30073102

FIGURE 2. Schematic of the LM7705 Evaluation Board

The layout of the evaluation board is given in Figure 3.



30073106

FIGURE 3. Layout of the LM7705 Evaluation Board

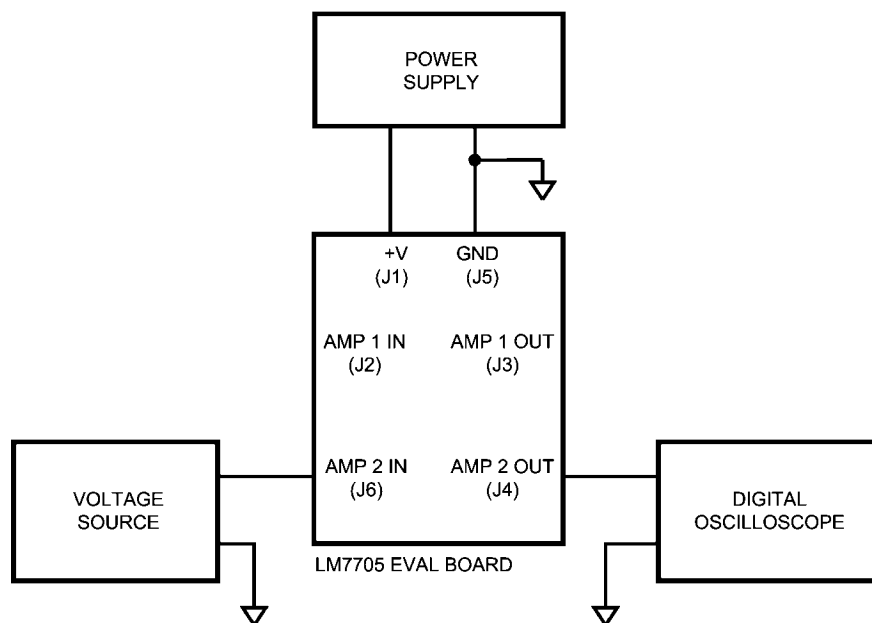
The table below shows the Bill of Material (BOM) of the evaluation board.

Designator	Description	Comment
R1, R2, R3, R4, R5, R6, R7, R8, R9, R10	0805 Resistor	10 k Ω
TP1, TP2, TP3, TP4, TP5, TP7	testpoint	white
TP6	testpoint	black
JP1, JP2	3 PIN header	
J1, J5	Jack connector	staking .350
J2, J3, J4, J6	BNC	
U1	LM340AT-5.0	TO-220
U2	LM7716MM	MSOP-8
U3	LM7705MM	MSOP-8
C1	0805 capacitor	220 nF
C2, C3, C5, C11, C13	0805 capacitor	100 nF
C4	0805 capacitor	4.7 uF
C14, C17	0805 capacitor	10 uF
C12, C18	0805 capacitor	22 uF
C6, C9, C15, C16	Not Stuffed	
C7, C8	3216 capacitor	6.8 uF
C10	0805 capacitor	470 nF

Measurement Procedure

The performance improvement of an op amp (the device acts as a real True-zero amplifier, using the LM7705 for the biasing

of the negative supply pin of the op amp), is shown in this section. The setup used for these measurements is given in *Figure 4*.



30073103

FIGURE 4. Measurement Setup

A supply voltage between 8V to 16V is provided to connector J1. The ground connection is wired to J5. The on board 5V regulator provides a constant supply voltage for the op amp and the LM7705. The LM7705 can be activated by placing jumper JP1 in position 2-3. A signal generator is connected to J6 and generates a DC signal varying with a low frequency, with an amplitude of 25 mV_{PP}, and an offset of 12.5 mV. Both amplifier U2A and U2B have a fixed gain setting of 2x. The output signal of the amplifier (J4) can be observed with a digitizing oscilloscope or an Analog to digital Converter board and processing software. The voltage level of the negative supply voltage pin of the op amps can be selected with jumper

JP2. Placing JP2 in position 1-2, will provide a voltage of -0.23 to the negative supply voltage pin of the op amp. Placing JP2 in position 2-3 will connect the negative supply voltage pin of the op amp to ground. In this way only the output behavior of amplifier U2B is observed.

Measurement Results

Figure 5 shows the output voltage of op amp U2B without (A) and with (B) the LM7705. Output voltage measurement is performed with a 12 bit ADC.

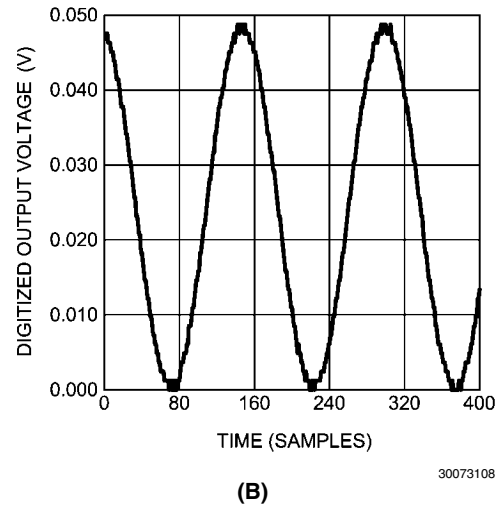
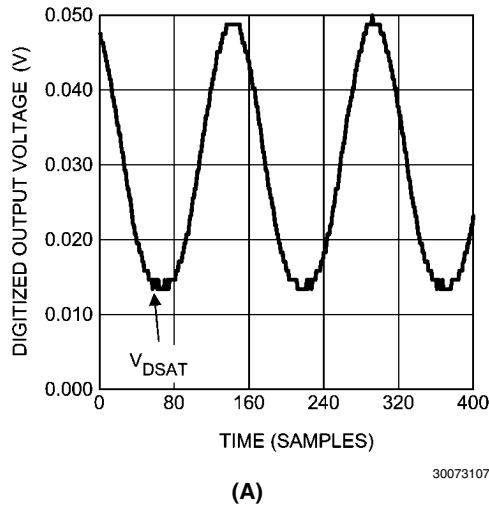


FIGURE 5. Amplifier Output Voltage

Figure 5A shows the output voltage of amplifier U2B, when the negative supply pin is connected to ground level. The voltage swing at the low side is limited by the saturation voltage of the amplifier. Figure 5B shows the output voltage swing

of amplifier U2B when the negative supply pin is connected to the fixed negative output voltage of the LM7705. Using the LM7705 amplifier U2B can act as a True-zero amplifier.

Notes

AN-1883

Notes

For more National Semiconductor product information and proven design tools, visit the following Web sites at:

Products		Design Support	
Amplifiers	www.national.com/amplifiers	WEBENCH® Tools	www.national.com/webench
Audio	www.national.com/audio	App Notes	www.national.com/appnotes
Clock and Timing	www.national.com/timing	Reference Designs	www.national.com/refdesigns
Data Converters	www.national.com/adc	Samples	www.national.com/samples
Interface	www.national.com/interface	Eval Boards	www.national.com/evalboards
LVDS	www.national.com/lvds	Packaging	www.national.com/packaging
Power Management	www.national.com/power	Green Compliance	www.national.com/quality/green
Switching Regulators	www.national.com/switchers	Distributors	www.national.com/contacts
LDOs	www.national.com/ldo	Quality and Reliability	www.national.com/quality
LED Lighting	www.national.com/led	Feedback/Support	www.national.com/feedback
Voltage Reference	www.national.com/vref	Design Made Easy	www.national.com/easy
PowerWise® Solutions	www.national.com/powerwise	Solutions	www.national.com/solutions
Serial Digital Interface (SDI)	www.national.com/sdi	Mil/Aero	www.national.com/milaero
Temperature Sensors	www.national.com/tempensors	SolarMagic™	www.national.com/solarmagic
Wireless (PLL/VCO)	www.national.com/wireless	PowerWise® Design University	www.national.com/training

THE CONTENTS OF THIS DOCUMENT ARE PROVIDED IN CONNECTION WITH NATIONAL SEMICONDUCTOR CORPORATION ("NATIONAL") PRODUCTS. NATIONAL MAKES NO REPRESENTATIONS OR WARRANTIES WITH RESPECT TO THE ACCURACY OR COMPLETENESS OF THE CONTENTS OF THIS PUBLICATION AND RESERVES THE RIGHT TO MAKE CHANGES TO SPECIFICATIONS AND PRODUCT DESCRIPTIONS AT ANY TIME WITHOUT NOTICE. NO LICENSE, WHETHER EXPRESS, IMPLIED, ARISING BY ESTOPPEL OR OTHERWISE, TO ANY INTELLECTUAL PROPERTY RIGHTS IS GRANTED BY THIS DOCUMENT.

TESTING AND OTHER QUALITY CONTROLS ARE USED TO THE EXTENT NATIONAL DEEMS NECESSARY TO SUPPORT NATIONAL'S PRODUCT WARRANTY. EXCEPT WHERE MANDATED BY GOVERNMENT REQUIREMENTS, TESTING OF ALL PARAMETERS OF EACH PRODUCT IS NOT NECESSARILY PERFORMED. NATIONAL ASSUMES NO LIABILITY FOR APPLICATIONS ASSISTANCE OR BUYER PRODUCT DESIGN. BUYERS ARE RESPONSIBLE FOR THEIR PRODUCTS AND APPLICATIONS USING NATIONAL COMPONENTS. PRIOR TO USING OR DISTRIBUTING ANY PRODUCTS THAT INCLUDE NATIONAL COMPONENTS, BUYERS SHOULD PROVIDE ADEQUATE DESIGN, TESTING AND OPERATING SAFEGUARDS.

EXCEPT AS PROVIDED IN NATIONAL'S TERMS AND CONDITIONS OF SALE FOR SUCH PRODUCTS, NATIONAL ASSUMES NO LIABILITY WHATSOEVER, AND NATIONAL DISCLAIMS ANY EXPRESS OR IMPLIED WARRANTY RELATING TO THE SALE AND/OR USE OF NATIONAL PRODUCTS INCLUDING LIABILITY OR WARRANTIES RELATING TO FITNESS FOR A PARTICULAR PURPOSE, MERCHANTABILITY, OR INFRINGEMENT OF ANY PATENT, COPYRIGHT OR OTHER INTELLECTUAL PROPERTY RIGHT.

LIFE SUPPORT POLICY

NATIONAL'S PRODUCTS ARE NOT AUTHORIZED FOR USE AS CRITICAL COMPONENTS IN LIFE SUPPORT DEVICES OR SYSTEMS WITHOUT THE EXPRESS PRIOR WRITTEN APPROVAL OF THE CHIEF EXECUTIVE OFFICER AND GENERAL COUNSEL OF NATIONAL SEMICONDUCTOR CORPORATION. As used herein:

Life support devices or systems are devices which (a) are intended for surgical implant into the body, or (b) support or sustain life and whose failure to perform when properly used in accordance with instructions for use provided in the labeling can be reasonably expected to result in a significant injury to the user. A critical component is any component in a life support device or system whose failure to perform can be reasonably expected to cause the failure of the life support device or system or to affect its safety or effectiveness.

National Semiconductor and the National Semiconductor logo are registered trademarks of National Semiconductor Corporation. All other brand or product names may be trademarks or registered trademarks of their respective holders.

Copyright© 2009 National Semiconductor Corporation

For the most current product information visit us at www.national.com



**National Semiconductor
Americas Technical
Support Center**
Email: support@nsc.com
Tel: 1-800-272-9959

**National Semiconductor Europe
Technical Support Center**
Email: europe.support@nsc.com

**National Semiconductor Asia
Pacific Technical Support Center**
Email: ap.support@nsc.com

**National Semiconductor Japan
Technical Support Center**
Email: jpn.feedback@nsc.com