

Four-Speed Fan Control Using Simple Remote Diode Temperature Sensor

National Semiconductor
Application Note 1262
September 2002



The circuit shown in *Figure 1* controls the speed of a 12V DC fan using an LM88 Remote Diode Temperature Sensor (RDTS) IC. The LM88 is a dual remote diode temperature sensor with 3 digital comparators and has 3 open-drain outputs (O_SP0, O_SP1 and O_CRIT) that can be used as interrupts or to signal system shutdown. The digital comparators can be programmed independently to make a greater than or less than comparison. When programmed for a greater than comparison:

- O_SP0 and O_SP1 activate when the temperatures measured by D0 or D1 exceed the associated setpoints of T_SP0 or T_SP1.
- O_CRIT activates when the temperature measured by either D0 or D1 exceeds set point T_CRIT.

T_CRIT can be set at 1°C intervals from -40°C to +125°C. T_SP0 and T_SP1 can be set at 4°C intervals in the range of T_CRIT, ±100°C.

In the circuit shown in *Figure 1* the two D+ inputs have been wired in parallel to allow all three set points to be evaluated against a single temperature measurement. The hysteresis of each comparator is internally set to 1°C, allowing the set point values to be placed very close together without any interaction. The three outputs of the LM88 are connected to resistors forming a crude 2-bit DAC. The output of this DAC is fed to a PNP emitter follower, controlling the voltage on the negative pin of the fan from 1.25V to 5.7V. The output voltage (V_{OUT}) decreases as the temperature reading increases, when SP0 < SP1 < CRIT.

The equations shown in *Figure 1* describe the behavior of V_{OUT}. The maximum speed of the fan is dependent on the minimum V_{OUT}. The minimum V_{OUT} is dependent on the drain to source on resistance (R_{ds}) of the O_CRIT output, the MPSW51's beta and base emitter voltage when R₅ is set to 0Ω (as shown in *Figure 1*). The MPSW51 beta variation will introduce an error term that cannot be accounted for. Therefore, it is tempting to make the current through the resistors as high as possible. Increasing this current is a "Catch 22", because the minimum V_{OUT} level will increase as the current increases, because of O_CRIT's R_{ds} that is typical 100Ω and worst case .4V/3 mA = 133Ω. A compromise would be to set this current 10 times the MPSW51 base current.

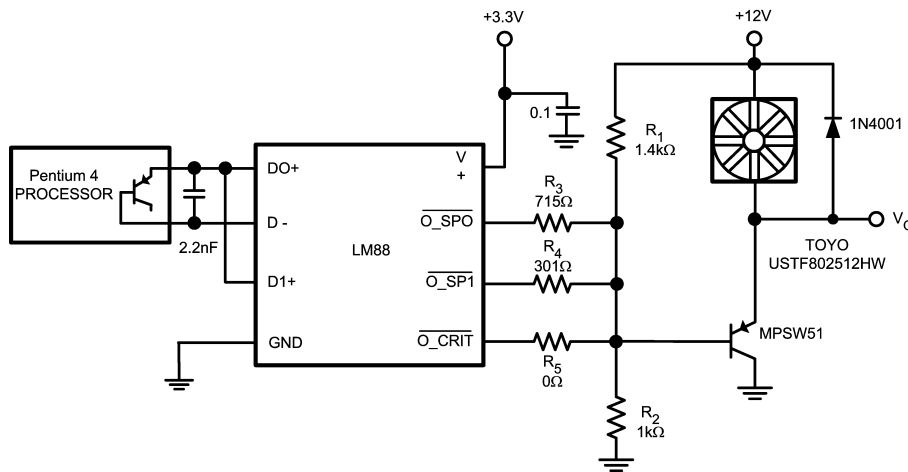
O_SP0, O_SP1 and O_CRIT have a maximum voltage limit of 5V. This sets the ratio of R₂/(R₂+R₁) = 5/12 = 0.41666.

The current through R₁ and R₂ should be set such that the base current of the MPSW51 is negligible. The current through the fan with (12 - 5.7) 6.3V is about 65mA or so. That makes the base current about 65mA/130 = 0.5 mA. Since the beta will vary slightly as the collector current changes, it's best to set the current through R₁/R₂ ten times greater than 0.5 mA. Therefore:

$$(R_1 + R_2) = 12V / 5mA = 2400\Omega$$

$$\text{Since } R_2 / (R_2 + R_1) = 5/12$$

$$R_2 = (5/12) * (2400) = 1000\Omega \text{ and } R_1 = 1400\Omega$$



20056601

- if TD < SP0 V_{OUTmin} = 5.7V (fan min. on)
- if TD < SP1 V_{OUTint1} = ((Rp23/(R1+Rp23))12V)+0.7V=3.61V
- if TD < CRIT V_{OUTint2} = ((Rp234/(R1+Rp234))12V)+0.7V=2.28V
- if TD < CRIT V_{OUTmax} = ((Rp2345/(R1+Rp2345))12V)+0.7V=1.25V

where SP0 < SP1 < CRIT and TD=diode temperature, see text for values of Rp23, Rp234 and Rp2345

FIGURE 1. Low Cost Remote Diode Temperature Fan Speed Control

When the temperature of the diode is less than the SP0, SP1 and T_CRIT set points, all of the LM88's outputs will be deactivated. Therefore, V_{OUT} will be set to approximately 5.7V. This will set the slowest speed of the fan.

The first intermediate fan speed will be set when only O_SP0 is activated. This happens when the temperature measured is greater than the SP0 set point but less than the SP1 and CRIT set points. For this case the following equations set V_{OUT} :

$$R_{p23} = (R3+R_{ds}) \parallel R2 = 1 / (1 / (R3+R_{ds}) + 1 / R2)$$

$$V_{OUT_int1} = ((R_{p23} / (R1+R_{p23})) 12V) + 0.7V$$

Therefore, if $R_{ds} = 100\Omega$ typical, then with $R3 = 715\Omega$, $V_{OUT} = 3.614V$ making the voltage across the fan equal to $12V - 3.614V = 8.386V$.

The second intermediate speed of the fan will be set when both O_SP0 and O_SP1 are activated. This happens when the temperature measured is greater than both the SP0 and SP1 set points but less than the CRIT set point. For this case the following equations set V_{OUT} :

$$R_{p234} = (R3+R_{ds}) \parallel (R4+R_{ds}) \parallel R2 =$$

$$1 / (1 / (R3+R_{ds}) + 1 / (R4+R_{ds}) + 1 / R2)$$

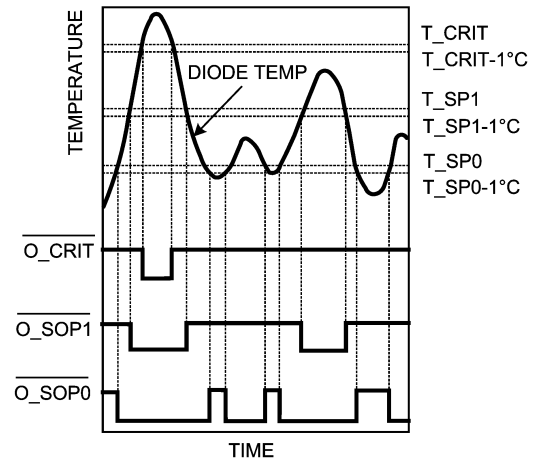
$V_{OUT_int2} = ((R_{p234} / (R1+R_{p234})) 12V) + 0.7V$. If $R3 = 715\Omega$ and $R_{ds} = 100\Omega$ (typical) setting $R4$ to 301Ω will give a $V_{OUT} = 2.277V$ making the voltage across the fan equal to $12V - 2.277V = 9.723V$.

The fourth, and maximum, speed of the fan will be set when all three outputs O_CRIT, O_SP0 and O_SP1 are activated. This happens when the temperature measured is greater than all three set points. For this case the following equations set V_{OUT} :

$$R_{p2345} = (R5+R_{ds}) \parallel (R4+R_{ds}) \parallel (R3+R_{ds}) \parallel R2 =$$

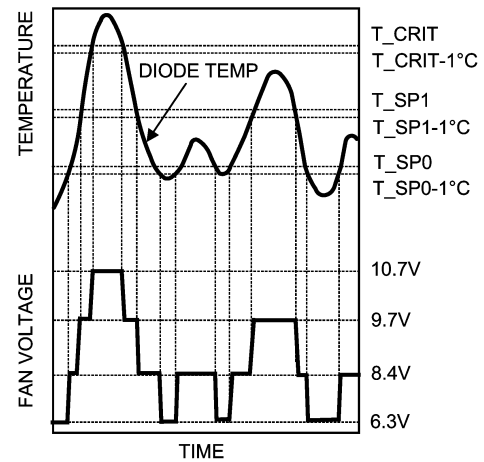
$$1 / (1 / (R5+R_{ds}) + 1 / (R4+R_{ds}) + 1 / (R3+R_{ds}) + 1 / R2)$$

$V_{OUT_max} = ((R_{p2345} / (R1+R_{p2345})) 12V) + 0.7V$. If $R3 = 715\Omega$, $R4 = 301\Omega$ and $R_{ds} = 100\Omega$ (typical) setting $R5$ to 0Ω will give $V_{OUT} = 1.255V$ making the maximum voltage across the fan equal to $12V - 1.255V = 10.745V$.



20056602

FIGURE 2. Temperature Response Diagram Of The LM88's Outputs



20056603

FIGURE 3. Fan Voltage Temperature Response

Using 1% resistor values measurements were made and the measured V_{OUT} was within 3% of the calculated V_{OUT} voltage.

Figures 2 and 3 show the temperature response diagram of the LM88's outputs and the fan voltage. As the temperature increases the sequential activation of O_SP0 followed by O_SP1 and finally O_CRIT cause the voltage across the fan to increase.

Notes

LIFE SUPPORT POLICY

NATIONAL'S PRODUCTS ARE NOT AUTHORIZED FOR USE AS CRITICAL COMPONENTS IN LIFE SUPPORT DEVICES OR SYSTEMS WITHOUT THE EXPRESS WRITTEN APPROVAL OF THE PRESIDENT AND GENERAL COUNSEL OF NATIONAL SEMICONDUCTOR CORPORATION. As used herein:

1. Life support devices or systems are devices or systems which, (a) are intended for surgical implant into the body, or (b) support or sustain life, and whose failure to perform when properly used in accordance with instructions for use provided in the labeling, can be reasonably expected to result in a significant injury to the user.
2. A critical component is any component of a life support device or system whose failure to perform can be reasonably expected to cause the failure of the life support device or system, or to affect its safety or effectiveness.



National Semiconductor Corporation
Americas
Email: support@nsc.com

www.national.com

National Semiconductor Europe

Fax: +49 (0) 180-530 85 86
Email: europe.support@nsc.com
Deutsch Tel: +49 (0) 69 9508 6208
English Tel: +44 (0) 870 24 0 2171
Français Tel: +33 (0) 1 41 91 8790

National Semiconductor Asia Pacific Customer Response Group

Tel: 65-2544466
Fax: 65-2504466
Email: ap.support@nsc.com

National Semiconductor Japan Ltd.

Tel: 81-3-5639-7560
Fax: 81-3-5639-7507